

2013-2014 **ANNUAL REPORT**



LSU

DONALD P. AND KATHERINE B.
LOKER UNIVERSITY STUDENT UNION, INC





INTRODUCTION

- 4 Mission & Vision Statements
- 5 Message from the Board Chair
- 6 Message from the Director
- 8 Organizational Chart

EVENTS & MARKETING

- 12 Toro Productions Events
- 16 Social Media
- 18 Reservations and Event Services

FACILITIES

- 22 What's New
- 24 Sustainable Initiatives

STAFF

- 28 Student Employment
- 30 Professional Staff Highlights

FINANCES

- 34 Statement of Net Position
- 35 Statement of Revenues, Expenses
& Changes in Net Position

LOKER STUDENT UNION

MISSION STATEMENT

The Loker Student Union provides an environment which is designed to encourage interaction among the campus' constituent groups (internal and external), enhance the sense of campus community, and expand the avenues through which the university educates students.

Through its many activities and services, the Loker Student Union provides cultural, social and recreational programming that supports the educational mission of the University, encouraging the development of citizenship, leadership, and social responsibility for success in a dynamic and a pluralistic society.

VISION STATEMENT

The Loker Student Union is the heart of the campus community offering programs and services which foster interactions across students, faculty, staff and administrators; ultimately creating heartfelt connections and a sense of belonging.

MESSAGE

FROM THE BOARD CHAIR



Jordan Sylvestre
Chair, Board of Directors

The Loker Student Union (LSU) saw a number of physical changes, exciting events, and important initiatives take place during the 2013-2014 year that positively impacted the campus experience for our students.

One of our greatest accomplishments was the repurposing of currently available space. During the fall semester, the first floor and lower level of LSU received new seating furniture. Students now have more space to study or relax during their time in the Union, whether it is individually or in a group. Toros have shown great interest in our refurbished environment, and foot traffic has increased incredibly on the first floor.

One of the most visible examples of our re-utilization project was the installation over the winter break of dinner-style booths in the food court. Microwaves were also added, giving students more choices for their nutritional needs. Better utilization of space increases the usage of the facility, and the Board of Directors continues to take the necessary steps to support the Union's progress in this area. The

repurposing of space to create the meditation room, TV lounge, and KDHR Radio Station has been finalized and the LSU will begin construction in the upcoming year on those projects.

In the fall, the LSU was honored to bring to campus an event called "Legends of Belize." The cultural event took place during the month of October and was a presentation of paintings and sculptures created by GrisDis-mation. This team of artists brought visual life to the stories and legends of their native country of Belize to the students of Dominguez Hills. Toros were able to partake in an experience of unfamiliar lands, ancient temples, and creatures of the night, all with the intent of promoting cultural diversity on campus.

During the spring semester, I was fortunate to be able to work on an initiative for LSU that focused on the health and wellness aspect of the facility. The Union partnered with the Student Health Center on a mini health fair. Students were educated on the healthy food options located within the Union, health services offered on campus, and ways to be safe during the week of Spring Break. Under the initiative, the Board was also able to create and implement the first installment of the #ToroHealthy Campaign. The #ToroHealthy Campaign promotes the healthy choices students make while on campus and in LSU. Students were asked to track and share their positive eating habits and activity progress for six weeks to encourage a stronger and longer life for all Toros.

I am truly grateful for my opportunity to serve as Chair of the Board of Directors this 2013-2014 school year and for the guidance and support of the Board and LSU Director. I am proud to consider myself a Toro and I appreciate the opportunity to impact Dominguez Hills.

MESSAGE

FROM THE DIRECTOR



Cecilia Ortiz
Director

Welcome to the 2013–2014 issue of the Donald P. and Katherine B. Loker University Student Union, Inc. (LSU) Annual Report celebrating the past year's accomplishments.

In the past year, students, volunteers, and staff endeavored to produce a rich offering of programs and services to meet the needs and preferences of today's students. A notable achievement was the LSU's collaboration with Student Life departments to develop a year-long student leadership initiative. The goal of the initiative was to reinforce leadership strengths in current student leaders as well as to encourage other students to explore their leadership interests as a way to increase involvement amongst students. Through engagement, students are assisted in

achieving academic success and are expected to graduate well prepared to serve their organizations, communities, and society.

Other initiatives carried out by the LSU team targeted student satisfaction. In the area of events, the student volunteer board of the LSU, Toro Productions, introduced new novelty programs that drew large crowds; amongst them many new faces which had not been regulars before. A particular event that quickly became the buzz on campus was Winter Wonderland where students danced on an ice-skating simulation rink while snowflakes fell softly upon their heads.

On the facilities side, improvements continued in order to increase capacity in the building and to make better use of previously underutilized spaces. In the lower level of the building new furniture with personal desktops and power ports were installed, making what had been a ghost town into one of the most popular areas for students seeking places to study. The food court received a facelift with the installation of dining booths (with power ports of course) and a self-service microwave station. Feedback from students upon opening the remodeled areas was exuberant! To enhance the LSU experience, live plants were installed throughout public lounges.

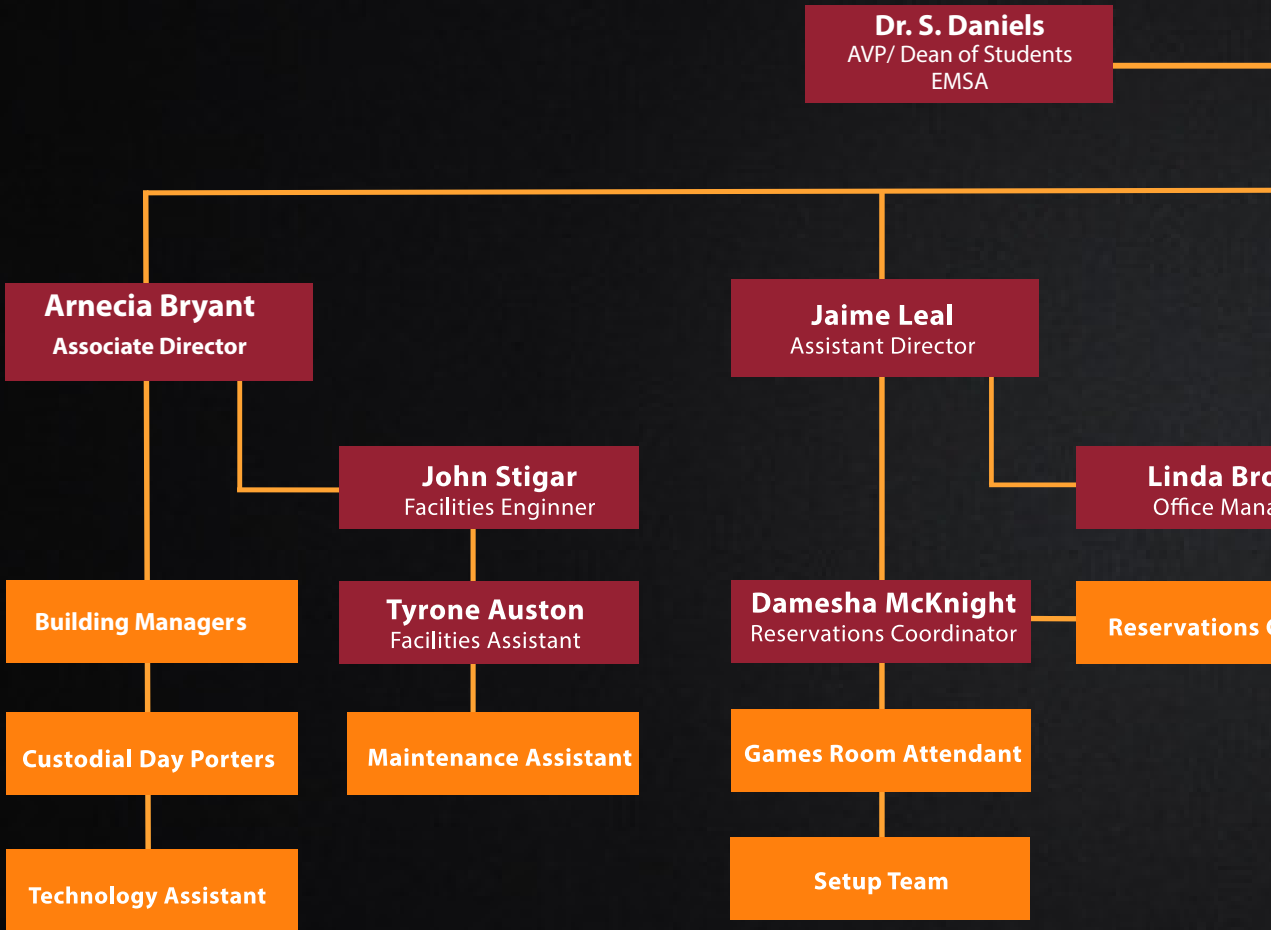
A noteworthy highlight came when the LSU was selected as the site of a week-long series of events in celebration of the newly appointed University President, Willie J. Hagan's investiture and inauguration. The springtime celebration showcased the LSU to the community at large. Looking ahead, we are planning more improvements to continue the momentum that has been building. The momentum will be captured in a **rebranding** of the

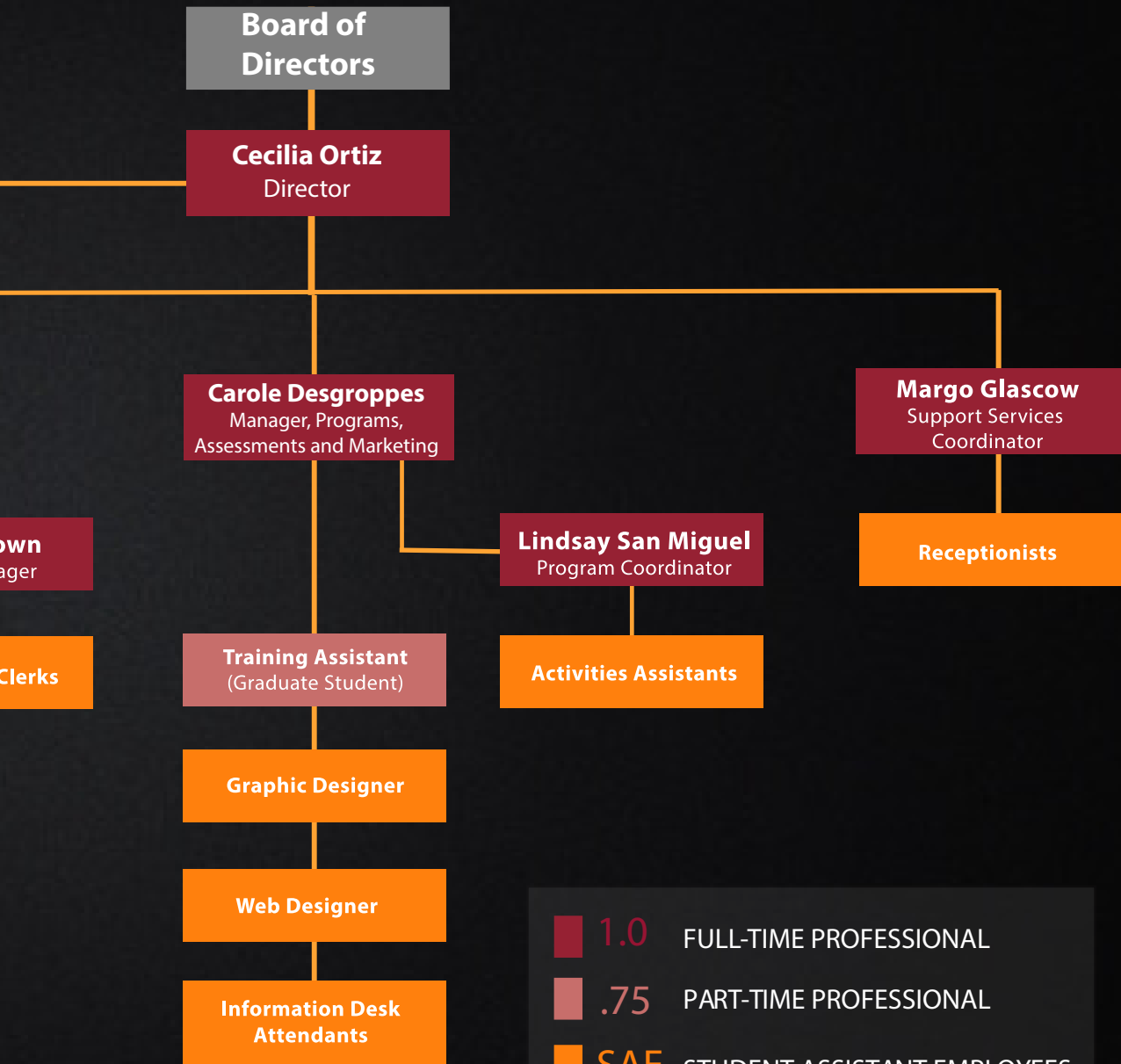
LSU. Some of the improvements include a new wellness track in event programming to be produced by Toro Productions. Facility enhancements will continue with new furnishings and finishes planned for the ballroom and pre-function spaces. And finally, a highly anticipated project will be completed, which will see the return of a reflection/meditation space and introduction of a television /media lounge.



LOKER STUDENT UNION, INC

ORGANIZATIONAL CHART 2013-2014









EVENTS & MARKETING

The **LOKER STUDENT UNION** works on creating **EVENTS** to bring the students and the **CAMPUS** together as one.

TORO PRODUCTIONS EVENTS

108

2013 - 2014

TORO PRODUCTIONS EVENTS



17,698

2013 - 2014

TOTAL ATTENDEES

BREAKDOWN OF EVENTS



ON THE ROAD



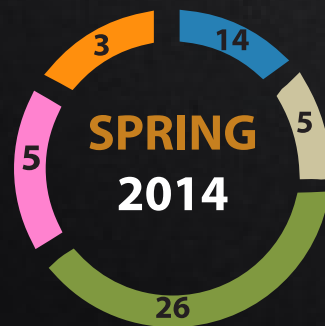
FILM & LECTURE



MUSIC & CULTURE

NOVELTY & VARIETY

CO-SPONSORSHIP



WINTER WONDERLAND



WAS ONE OF THE
**MOST SUCCESSFUL
& MOST ATTENDED
EVENT THIS YEAR!**

Toro Productions brought an ice skating rink to campus! Students enjoyed skating, listening to music featured by Lakin, making crafts, tasting warm winter drinks, eating snacks and dipping fruits in the chocolate fountain! This was a memorable event students talked about throughout the semester.

This year, Toro Productions planned various themed lectures and movies to enrich students' appreciation for differences as well as enhance their awareness of social justice. TP screened the documentary *Gideon's Army*, which examines America's criminal justice system by following the work and case loads of three court appointed attorneys in the Deep South. Following the screening Dawn Porter, filmmaker, attorney and criminal justice reformer spoke to over 100 students about making the documentary and the current status of our criminal justice system and the need for reform.

TP hosted a lecture to raise awareness about Human Trafficking. Theresa Flores, a survivor, shared her story and answered questions. Three movies were shown, each one followed by a discussion facilitated by the Multicultural Center or the Women's Resource Center: *Fruitvale Station* in honor of Black History Month; *Girl Rising* in honor of Women's History Month and *Chasing Rainbows*, which focused on LGBTQ awareness.



Toro Productions implemented new events this year to expose students to different experiences. **Fat Tuesday** brought a “Mardi Gras” New Orleans feel to the student union. Beads, masks, donuts, a photobooth, and Zydeco music filled up the room for two hours. **The Swing of Things** provided a swing dance lesson for an hour and a half and then students practiced their moves freely for another hour and a half with a live swing band.

Before Finals Week, TP provided students with various **stress relief activities** (healthy snacks, free scantron, massages, nap area, board games, free play in the game room, and crafts). They also set up quiet study spaces throughout the building to fit students’ needs.



GUEST SPEAKERS

Toro Productions collaborated with student life departments to invite Wil Haygood the author of “**The Butler: A Witness to History**” to speak about his journey to meet the “Butler”, Eugene Allen, and write about his life. He delivered an inspiring and emotional message to our students and faculty.



NOONTIME CONCERTS



CAMPUS TRIPS

Toro Productions hosted six off campus trips to provide a different and unique experience to students.

- Knott's Scary Farm
- Lion King
- Lakers game
- Big Bear
- San Diego Safari Park



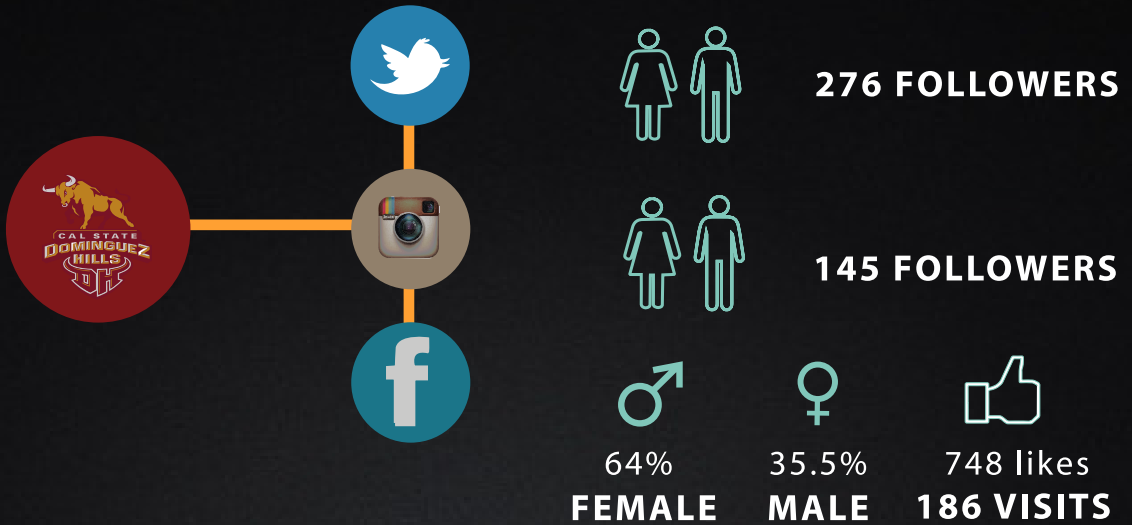


TALENT SHARING AND FRIENDSHIPS



FRIENDSHIPS

FOLLOW US NOW!



ENGAGING WITH STUDENTS ONLINE

The Loker Student Union used social media to foster student engagement in the student union. Nowadays students are often on their electronic devices to find out the latest scoop, information or update on what's going on in the world but also on their campus. The LSU connected with students on Facebook, Twitter and Instagram.

As we embark in a re-branding project, the LSU had launched social media assessment to collect students' feedback. Students are more inclined to share honest feedback online rather than in person. This tool has been beneficial in collecting comments from students.

RESERVATIONS & EVENT SERVICES



3,528

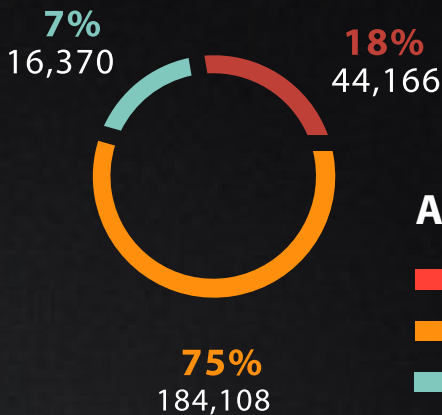
CAMPUS DEPT. STUDENT CLUBS
AND ORGANIZATIONS

171

OFF CAMPUS COMMUNITY
SPONSORED EVENTS

3,699

NUMBER OF EVENTS HELD IN
THE LSU 2013-2014



TYPE OF EVENTS

ATTENDANCE

■ Student Clubs & Organizations	44,166
■ Campus Departments	184,108
■ Off Campus Community	16,370
Total Attendees	244,644

SYMPOSIUMS

- Student & Faculty Research Symposium
- Community Engagement Symposium
- 8th Annual Martin Luther King Jr. Symposium
- International Symposium of Hispanic Literature

GRADUATIONS

- Lavender Graduation
- Veterans Graduation
- Asian & Pacific Islander Graduation
- MEPN Pinning Ceremony
- MSW Graduation
- EOP Graduation
- ETE's 2009 COHORTS Graduation
- 10th Annual Dolores Huerta Graduation
- 19th Annual Douglass & Mary Bethune Graduation

CELEBRATIONS

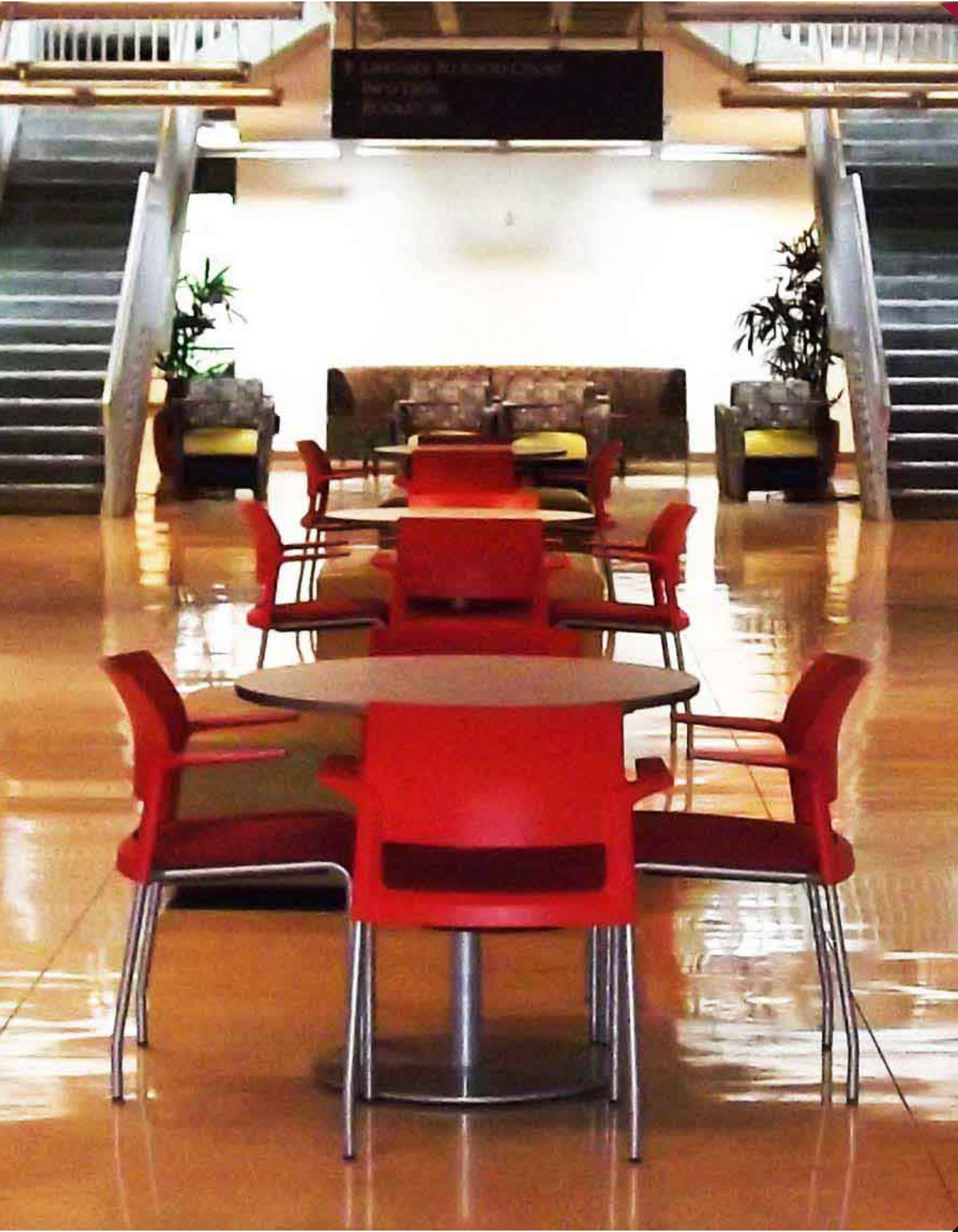
- Normandie Church of Christ 50 Anniversary
- University Community Brunch
- Athletics End of the Year Celebration
- McNair Scholarship Reception
- President's Student Leadership and Service Awards

CAMPUS/ UNIVERSITY SPECIAL EVENTS

- New Student Orientation
- ETE/ EOP Summer Bridge
- President's Investiture
- Everyday is Veterans Day
- Super Saturday
- Presidential Scholarship Competition
- Career Center Job Fair
- Student Health & Psychological
- Service Health Fair

CONFERENCES

- 4th Annual Mental Health Conference
- 2nd Annual STEM Education Conference
- Stop the Pain Teen Summit
- 4th Annual Circle of Change Conference
- Male Success Alliance Spring Summit
- Women in STEM Conference





FACILITIES

As the **Loker Student Union** continues to expand, projects completed during **2013-2014** responded to **student needs**, accessibility, sustainability and overall service to internal and external customers.

WHAT'S NEW



**PLANTS
THROUGHOUT
THE BUILDING
ARE BRINGING
LIFE
TO THE LSU.**

The LSU responded to students needs by adding the following:

- Relocation and remodel of
- Office of Student Life
- New booths in the food court
- New upholstery
- New furniture with power ports
- New microwaves



SUSTAINABLE INITIATIVES



All trimmed and pruned plants are converted to mulch then used for covering landscaped areas.



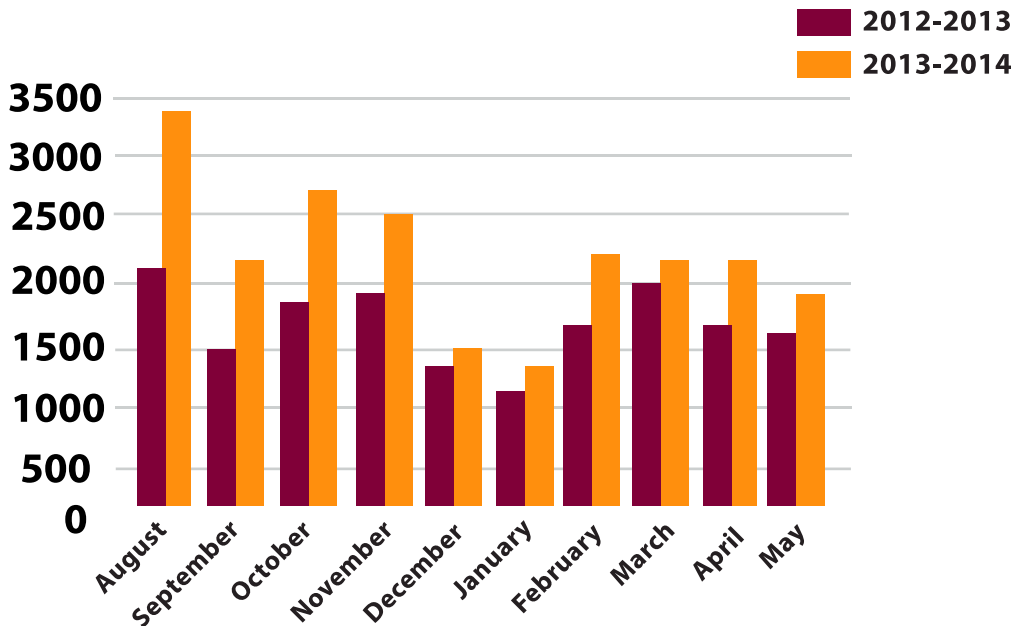
Hand dryers replaced paper towels in all restrooms.



AVERAGE NUMBER OF DAILY VISITORS

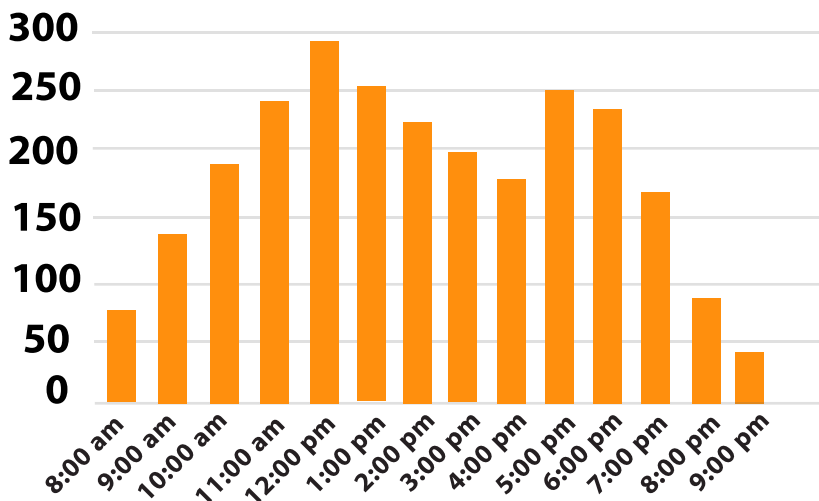
THE LOKER STUDENT UNION

2013-2014 ACADEMIC YEAR



AVERAGE NUMBER OF VISITORS PER HOUR

2013-2014 ACADEMIC YEAR







STAFF



“ THE LOKER STUDENT UNION PROVIDES AN
EMPLOYMENT PROGRAM
FOR ITS STUDENTS. IT'S NOT JUST A JOB.
IT'S AN EXPERIENCE ”

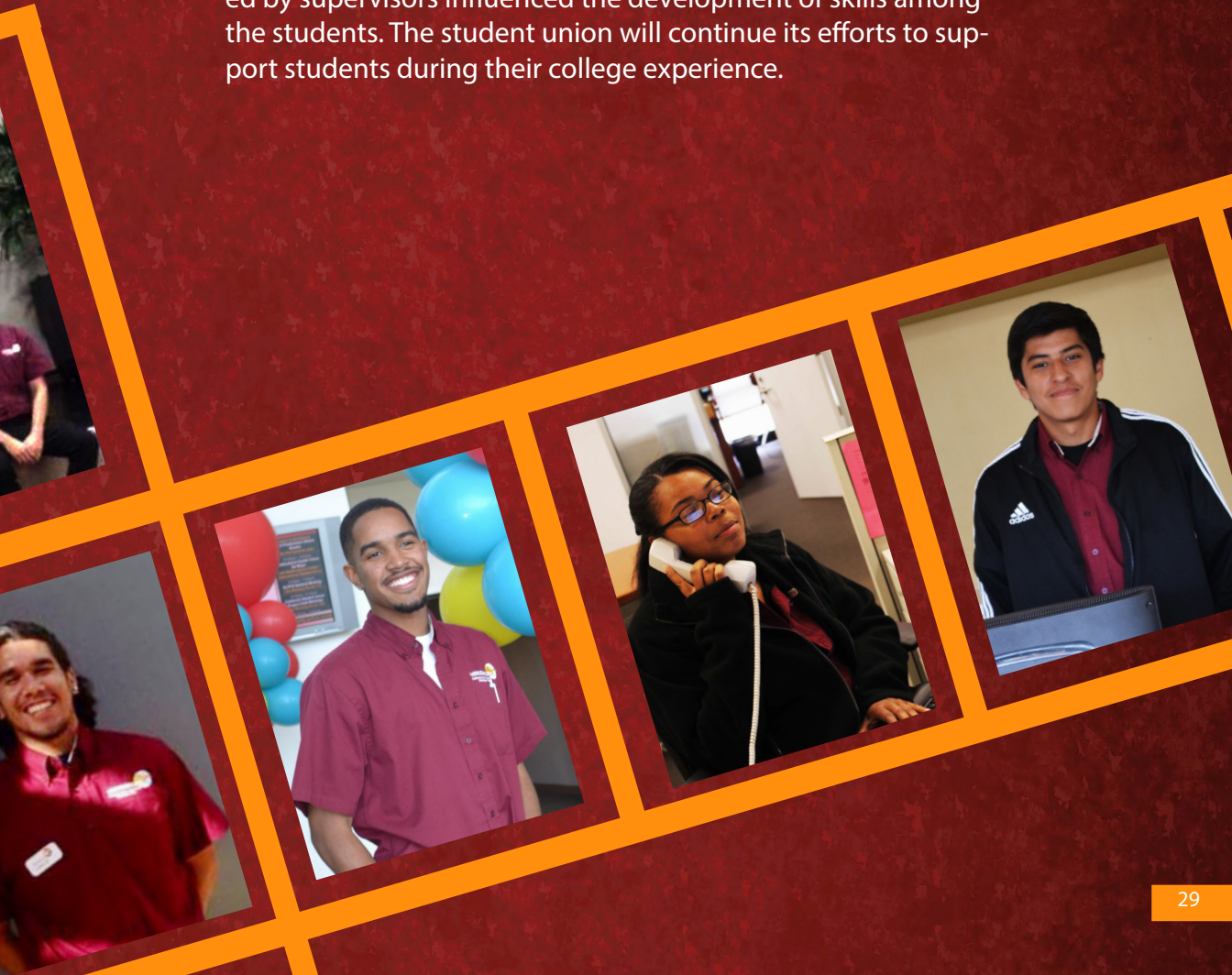


GRAM

11

The Loker Student Union student employment program strives to promote avenues for students to learn and develop into socially responsible citizens and leaders in order to graduate and become successful in the workplace. Students participated in two day-long trainings and monthly two -hours in-service trainings that intentionally covered the 2013-2014 LSU Student Learning Outcomes through lectures, activities and discussions that sequentially increased in intensity over time.

The combination of all trainings along with the guidance provided by supervisors influenced the development of skills among the students. The student union will continue its efforts to support students during their college experience.



PROFESSIONAL ASSOCIATIONS

Carole Desgropes, Manager, Programs, Marketing and Assessments, served as the Inclusivity Coordinator for the Association of College Unions International (ACUI) Regional Leadership Team (R1). She has been selected as the Regional Director-Elect for a two year term for Region 1. She also continued to be active with the ACUI Community of Practice for Multiethnic Professionals and Allies by planning a meeting and reception at the ACUI Annual Conference in Orlando.

Cecilia Ortiz, Director, served as a member of the Conference Planning Team for the ACUI Regional Conference (Nov. 2014) at University of La Verne.

AWARDS

Jordan Sylvestre, Chair, Board of Directors, received the Carol Burke Memorial Scholarship Award, at the ACUI Regional Conference in Hawaii in November.

Carole Desgropes, Manager, Programs, Marketing and Assessments, received the Diane Morisato Award at the ACUI Regional Conference in Hawaii in November. The award is given to a staff member in college unions who has served as a model of volunteer involvement and service to the college unions/student activities field and ACUI regional activities.

PRESENTATIONS

Arnecia Bryant, Associate Director, presented “Ethical Leadership” workshop for the Passport to Leadership in September and October 2013.

Carole Desgropes, Manager, Programs, Marketing and Assessments, presented “Art of Delegation and Collaboration” and “Marketing and Promotion” workshops for the Passport to Leadership in September and October 2013.

Vannessa Falcon, Training Assistant, presented “What Does it Mean to be an Agent of Change?” workshop at the 12th Annual Leadership Retreat at CSU Los Angeles in April 2014.

Vannessa Falcon also presented “The hybrid identity formation process of college students who live a Transborder Lifestyle in the San Diego, California and Tijuana, Mexico region” at the 4th Binational Border Conference on Border Issues in San Diego in December 2013.

Cecilia Ortiz presented “Vision and Goal Setting” workshop for the Passport to Leadership in September 2013.

MEET OUR NEW STAFF



Tyrone Auston
Maintenance Assistant



John Pharris
Services Manager



LOKER STUDENT UNION



FINANCES

The Loker Student Union
is continually improving
the structure of this **unique building**
to provide better services to the students.

STATEMENT OF NET POSITION (AUDITED)

ASSETS

CURRENT ASSETS

	2014	2013	CHANGE
Cash and cash equivalents	446,599	398,849	47,750
Short - term investments	1,559,202	1,505,230	53,972
Account receivable, net	6,770	6,261	509

Total current assets	2,012,571	1,910,340	102,231
----------------------	-----------	-----------	---------

PROPERTY AND EQUIPMENT

Capital assets, net	219,677	100,335	119,342
---------------------	---------	---------	---------

Total assets	2,232,248	2,010,675	221,573
--------------	-----------	-----------	---------

LIABILITIES AND NET ASSETS

CURRENT LIABILITIES

Accounts payable	49,875	108,593	(58,718)
Accrued salaries and benefits payable	5,302	4,661	641
Accrued compensated absences	44,357	37,474	6,883
Unearned revenue	6,675	5,349	1,326

Total current liabilities	106,209	156,077	(49,868)
---------------------------	---------	---------	----------

NONCURRENT LIABILITIES

Liability to beneficiaries	297,205	276,068	21,137
Total noncurrent liabilities	297,205	276,068	21,137

Total liabilities	403,414	432,145	(28,731)
-------------------	---------	---------	----------

NET POSITION

Net investment in capital assets	219,677	100,335	119,342
Unrestricted	1,609,157	1,478,195	130,962

Total net positions	1,828,834	1,578,530	250,304
---------------------	-----------	-----------	---------

Total liabilities and net positions	2,232,248	2,010,675	221,573
-------------------------------------	-----------	-----------	---------

STATEMENT OF REVENUES, EXPENSES, AND CHANGES IN NET POSITION

REVENUES

<i>OPERATING REVENUES</i>	<i>2014</i>	<i>2013</i>	<i>CHANGE</i>
Student fees	2,153,687	2,200,00	(46,313)
Sales and services of auxiliary enterprises	260,264	251,707	8,557
Other operating revenues	18,419	8,890	9,529
Total operating revenues	2,432,370	2,460,597	28,227

EXPENSES

<i>OPERATING EXPENSES</i>			
Student Services	147,282	176,576	(29,294)
Operation Expenses	1,978,731	2,080,376	(101,645)
Depreciation	59,207	26,292	32,915
Total operating expenses	2,185,220	2,283,244	(98,024)
Operating income (loss)			

NON-OPERATING REVENUES (EXPENSES)

<i>OPERATING EXPENSES</i>			
Investment income (Loss)	3,154	3,890	(736)
Increase (Decrease) in net positions	250,304	181,243	69,061
Net Position at beginning of the year	1,578,530	1,397,287	181,243
Net position at end of the year	1,828,834	1,578,530	250,304



CAL STATE
DOMINGUEZ
HILLS
DH